

Subscribe

Past Issues

Translate ▼

RSS

[View this email in your browser](#)



Share



Tweet



Forward

BRAINSTORM

An interdisciplinary and bilingual newsletter about advances in health ethics theory and practice

Editorial team:

Caroline Favron-Godbout
Ariane Quintal
Eric Racine, Ph.D.

**PRAGMATIC
HEALTH ETHICS
RESEARCH UNIT**



[Pragmatic Health Ethics Research Unit,
Institut de recherches cliniques de Montréal](#)

IRCM Institut de recherches
cliniques de Montréal

Volume: 15, Issue: 4

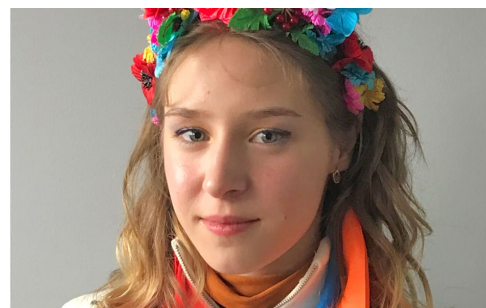
In this issue

- [Nouvelles de l'Unité de recherche en éthique pragmatique de la santé](#)
- [Monthly profile: Marjorie Montreuil, R.N., Ph.D.](#)
- [Events and announcements](#)
- [Scholarly literature and debates in news and social media](#)

[News from the Pragmatic Health Ethics Research Unit](#)

Journey of a Ukrainian war refugee student to the IRCM

The IRCM welcomes **Polina Grushevskya**, a philosophy student from Ukraine. Polina will join the Pragmatic Health Ethics Research Unit, directed by Eric Racine. Despite her young age, travelling alone and facing the unknown, Polina had to overcome many obstacles before she was finally able to leave her country by train and get



the right to enter Canada.

Among the best students in her philosophy program at the Taras Shevchenko National University in Kyiv, Polina's arrival could be a first step in the development of a Canada-Ukraine academic collaboration in health ethics. Helping exiled students to continue their studies during the conflict contributes to ensure that this country's next generation of intellectuals and scientists future can continue to develop despite the situation.

This sponsorship was made possible thanks to the exceptional mobilization of the IRCM's internal community for the [special campaign launched by the Pragmatic Health Ethics Research Unit, in collaboration with the IRCM Foundation Emergency Fund](#), to collect the necessary funds to ensure Polina's stay.

Profil du mois

Marjorie Montreuil, R.N., Ph.D.

Marjorie Montreuil is an assistant professor at McGill's Ingram School of Nursing. She has clinical experience as a mental health nurse and clinical nurse specialist. She completed a doctoral degree in nursing at McGill University in child mental health, and then pursued postdoctoral training in health ethics at the Pragmatic Health Ethics Research Unit under the supervision of Dr Eric Racine. Within her research program, she seeks to advance knowledge and practices in



child mental health to address ethical issues of high relevance to clinical care. Her current work focuses on the development and advancement of participatory approaches in research and clinical care; the study of children's experiences related to suicide prevention; and the development of an ethics framework that promotes children's inclusion in their own care. She also works with community organizations offering services to children and families to promote child mental health.

Towards a participatory ethics

I consider the field of health ethics would benefit from using participatory approaches, both for research and clinical practice. By "participatory approaches", I refer to patients, family members, healthcare workers, and ethicists working in partnership to improve health care. This partnership can take different forms depending on the context and situation, but would allow for an active engagement of the different parties in the decision-making process. Working with stakeholders opens up the possibility to develop ethical practices that are better attuned to the different perspectives present. In an era of evidence-informed healthcare practices, working in partnership with stakeholders to both develop evidence through research and improve the care offered is key to be more connected to local practices and shared understandings. It is however important to prevent tokenistic forms of

participation from stakeholders and pay particular attention to the process of engaging with patients and the ethical issues this process entails.

I also apply this participatory perspective to partnerships with children, who I consider should be involved as stakeholders in matters that affect them. This engagement with children contributes to move away from the view of children as objects of care and research, to consider children as full human beings (in contrast to human becomings) and agents who should actively contribute to processes and decisions that affect them.

Within my research program, I apply these participatory approaches to ethically sensitive issues in mental health care, such as the use of control measures and suicide prevention.

Publications sélectionnées

Montreuil, M., Bogossian, A., Laberge-Perrault, E., & Racine, E. (2021). [A review of approaches, strategies, and ethical considerations in participatory research with children.](#) *International Journal of Qualitative Methods*.

Montreuil, M., Martineau, J. T., & Racine, E. (2019). [Exploring ethical issues related to patient engagement in healthcare: Patient, clinician, and researcher's perspectives.](#) *Journal of Bioethical Inquiry*, 16(2), 237-248.

Montreuil, M., Thibeault, C., McHarg, L., & Carnevale, F. A. (2019). [Moral experiences of crisis management in a child mental health setting: A participatory hermeneutic ethnographic study.](#) *Culture, Medicine, and Psychiatry*, 44(01), 80-109.

Référence professionnelle

<https://www.mcgill.ca/nursing/about/faculty/faculty-directory/marjorie-montreuil>

Events and announcements

The Montreal Health Ethics Conference Series

The Montreal Health Ethics Conference Series is an annual series of bilingual conferences / webinars that aims to bring together clinicians, academics, patients, politicians, public figures, students, and community members to think about and discuss issues in health ethics. The series' objective, supported by many academic institutions located in Montreal, is to promote interdisciplinary reflection as well as foster new ways of thought that better

Conférences de Montréal en éthique de la santé



Jeudis - 12 h
Mode hybride | Gratuit
110, avenue des Pins Ouest, Montréal H2W 1R7
ZOOM **EVENTBRITE**
YOUTUBE **INFOS SÉRIE**

L'information en santé : Toujours le nerf de la guerre?

<p>Janvier 27 PANELISTES: Valérie Borde, chef du bureau Science et santé, magazine L'Express; Philippe Mercier, éditeur en chef, La Presse; Dr André Veilleux, directeur, Unité de recherche en oncologie moléculaire, IRCM; Association: Dr Robert Sengler, président, IRCM, professeur, IRCM Question de l'information en santé en contexte de pandémie</p> <p>Février 17 M. Sébastien Piché, oncologue spécialisé, chef de service, Médecin Martin Aouine Les aspects légaux de l'information en santé</p> <p>Mars 17 Discussion-débat entre Dr Bilo Racine et Dr Luc Boileau, président-directeur général, INESS Innovation et information en santé</p> <p>Avril 1 [vendredi] PANELISTES: Dr Christiane Appelo, directrice du laboratoire de contrôle de l'usage sportif (LCS); Sylvie Benoit, athlète olympique; Erico Closson, député; Assemblée nationale, ancien joueur de hockey; Dr Suzanne Lesieur, directrice médicale, ISM Québec Animation: Dr Eric Racine, directeur, Unité de recherche en éthique pragmatique de la santé, IRCM Sport, information et santé mentale</p>	<p>Avril 21 Aude Maréchal, professeure adjointe, ESPUM Les données cliniques 'in vivo réelles': Pour quel est-ce à la fois un atout, un défi et un risque ?</p> <p>Mai 20 [vendredi] PANELISTES: Charli Arcouette, chercheuse adjointe, Dr Emilia Liana Falcone, directrice de la clinique de recherche post-COVID-19, Dr Anne Duval, infectiologue-microbiologiste, Centre hospitalier Pierre-Lacaille; Jérémie Meier-Sénéchal, Association québécoise de la maladie de Lyme; Association: Anne Bouchard, présidente de l'ISQ, IRCM Maladies mal comprises, soins de qualité et information en santé</p> <p>Juin 9 Dr Marie-Pascale Poirier, professeure titulaire, ISQ; M. Marie-Anne Cloutier, patiente participante; Olivier Perrin, patient-partenaire Le partenariat de soins et de services au niveau clinique : un soutien émotionnel, éducatif et éducatif grâce à l'accompagnement par les pairs</p> <p>Septembre 15 Dr Hans Sjögreen, professeur et directeur, Laboratoire de Santé publique éducation et prévention de santé, Université de Bordeaux-Médecine Les prises de risque d'une pédagogie de l'éducation thérapeutique du patient</p>	<p>Octobre 13 Dr Daniel Constantinopolous, professeur and acting director of Institute of Aging and Lifetime Health, University of Victoria Une analyse politique des barrières à l'accès aux données pour la recherche en santé</p> <p>Novembre 10 Dr Robert Tseng, professor and director, Center for Bioethics, Harvard Medical School What is brain death? The imperative to communicate honestly and transparently with the public</p> <p>Décembre 1 PANELISTES: A confirmer ANIMATEUR: Dr Robert Sengler Retour sur la Série de conférences 2022</p>
--	--	--

assemble the larger public.

2022 THEME: Information and Health: Still the crux of the matter?

After decades of promoting patient rights and organizational transparency, is information still the crux of the matter in healthcare? There are many barriers to an optimal flow of information: the opacity of information on the functioning of the health system, the overabundance of contradictory information on mental and physical health, the emergence of telehealth platforms, and the role of the media in providing accurate information on health in times of pandemic. The Montreal Health Ethics Conference Series will call on various stakeholders from political, scientific, and government circles, as well as patients to determine whether information and its accessibility are still a fundamental health issue. Together, we will try to understand why and for whom this issue persists and discuss the possible solutions and promising practices. [Click here](#) for the conference series calendar.

Prochaine conférence:

Maladies mal comprises, soins de qualité et informations en santé (panel)

20 mai 2022 – 12h pm à 1h PM (EDT)

Panélistes : [Dre Emilia Liana Falcone](#), [Dr Amir Khadir](#), [Jérémie Meier-Sénéchal](#), [Charli Arcouette](#)

Animation : [Ariane Quintal](#)

Pour vous inscrire : [Cliquez ici](#)

[Call for abstracts: Posters and talks for the 2022 INS Annual Meeting 'Bringing neuroethics to life throughout patient care, research, and policy'](#)

Hybrid event: November 2-4, 2022

The International Neuroethics Society (INS) invites researchers and clinicians from around the world to submit abstracts for presentation at the 2022 INS Annual Meeting. The hybrid meeting — expected to include online and in-person opportunities — will take place in Montreal, Canada at the Institut de recherches cliniques de Montréal (IRCM).

Deadline for submission: May 31, 2022, at 11:30 PM (EDT). Incomplete or late submissions will not be accepted. All submissions must be made through the [abstract submission form](#).

For more details: [Click here](#)

[Appel de candidatures : Post-doctorant.e – Projet Laboratoire vivant en éthique de la santé](#)

Unité de recherche en éthique pragmatique de la santé, IRCM

Le ou la candidat.e sélectionné.e soutiendra la réalisation de divers projets en éthique de la santé dans le cadre de la conception d'un laboratoire vivant en éthique de la santé et prendra part au développement de nouvelles théories et méthodologies au cœur de notre programme de recherche en éthique pragmatique de la santé. Poste à temps plein d'une durée d'un an, avec possibilité de renouvellement pour une deuxième année. Veuillez faire parvenir les documents appuyant votre candidature à l'adresse suivante :

pragmatic.health.ethics@ircm.qc.ca à l'attention du Dr. Eric Racine. SVP spécifier « *Stagiaire postdoctoral.e - Éthique vivante* » dans l'objet de votre message.

Pour plus de détails : [Cliquez ici](#).

[Appel de candidatures : Assistant.e de recherche – Projet Laboratoire vivant en éthique de la santé](#)

Unité de recherche en éthique pragmatique de la santé, IRCM

Le ou la candidat.e sélectionné.e soutiendra la réalisation de divers projets en éthique de la santé dans le cadre de la conception d'un laboratoire vivant en éthique de la santé.

Poste à temps plein. Veuillez faire parvenir les documents appuyant votre candidature à l'adresse suivante : pragmatic.health.ethics@ircm.qc.ca à l'attention du Dr. Eric Racine. SVP spécifier « *Poste d'assistant de recherche - Éthique vivante* » dans l'objet de votre message.

Pour plus de détails : [Cliquez ici](#).

[Call for applications: 2022 summer school online – Bioethics, war & the pandemic Online Program – July 18-23, 2022](#)

The program includes a series of lectures and seminars, film screenings, webinars, and guest speakers. The faculty is comprised of notable scholars from around the world who lecture and conduct seminars on various topics including: Medicine and human rights in times of war; Global health policy and legislation; Covid 19 – allocations and resources; Ethical guidelines in clinical decision making and more. All application documents should be sent as an attachment *via email* to the School Director, Dr. Ana Lita PhD at alita@bioethicseducation.org

Deadline for applications: June 1, 2022.

For more details: [Click here](#).

[Call for submissions: 2022 virtual conference on health equity and health humanities](#)

Online event: July 26, 2022 – 12 PM (EDT)

NEGEA Health Equity Alliance for Equity (HEAL) Special Interest Group (SIG) and the Health Humanities as Teaching and Learning Strategy SIG invite proposals for oral

presentations and interactive workshops. Abstracts can focus on any level of medical education (UME, GME, CPD/faculty development) as well as on curricular, co-curricular, and/or extracurricular initiatives. Proposals should be submitted to NEGEAHealthHumanities@gmail.com. Abstract decisions will be sent to the first author by June 6, 2022. Abstracts will undergo a peer-review process by at least 2 reviewers.

Deadline for submissions: May 13, 2022 (11h59 PM EDT).

To register: [Click here](#).

For more details: [Click here](#)

[Call for registration: Caregiving NOW – New webinar series](#)

NewCourtland Center for Transitions and Health, University of Pennsylvania

This series will take a closer look at the caregiving crisis in the U.S. and the innovative solutions reshaping the caregiving landscape. Each session features innovators and thought leaders from multiple sectors engaged in the caregiving space in a moderated conversation.

To register : [Click here](#)

[Call for registration: Ethical issues we have faced over the pandemic](#)

The Hastings Center – Virtual event: May 11, 2022 – 5 PM to 7 PM (EDT)

Hastings Center president Mildred Z. Solomon will present “Ethical issues we Have faced over the pandemic and lessons learned” at the Program for Biomedical Ethics seminar at the Yale School of Medicine Program for Biomedical Ethics.

To register: [Click here](#).

[Literature](#)

Interdisciplinary foundations of health ethics

[A call for evidence-based clinical ethics consultation.](#)

Malek J. *Am J Bioeth.* 2022 Apr;22(4):40-42.

[Autonomy concerns with using contracts to enhance patient adherence.](#)

Strassle CL, Schwan B, Berkman BE. *Bioethics.* 2022 Apr 22. Online ahead of print.

[Research on dead human bodies: African perspectives on moral status.](#)

Matisonn H, Muade NE. *Dev World Bioeth.* 2022 Apr 21. Online ahead of print.

[Revisiting respect for persons: conceptual analysis and implications for clinical practice.](#)

Subramani S, Biller-Andorno N. *Med Health Care Philos.* 2022 Apr 10:1-10. Online ahead of print.

[A scoping review on the concept of physician caring.](#)

Burstein DS, Svigos F, Patel A, Reddy NK, Michelson KN, O'Dwyer LC, Linzer M, Linder JA, Victorson D. *J Gen Intern Med*. 2022 Apr 7:1-13. Online ahead of print.

Methodologies and practices in health ethics

[Equity-mobilizing partnerships in community \(EMPaCT\): Co-designing patient engagement to promote health equity.](#)

Sayani A, Maybee A, Manthorne J, Nicholson E, Bloch G, Parsons JA, Hwang SW, Shaw JA, Lofters A; Members of EMPaCT. *Healthc Q*. 2022 Apr;24(SP):86-92.

[A stakeholder-informed ethical framework to guide implementation of suicide risk prediction models derived from electronic health records.](#)

Yarborough BJH, Stumbo SP. *Arch Suicide Res*. 2022 Apr 21:1-14. Online ahead of print.

[Governance of emerging technologies in health and medicine - creating a new framework.](#)

Mathews DJH, Balatbat CA, Dzau VJ. *N Engl J Med*. 2022 Apr 13. Online ahead of print.

[Clinical ethics support services in paediatric practice: protocol for a mixed studies systematic review on structures, interventions and outcomes.](#)

Dittborn M, Portales B, Brierley J. *BMJ Open*. 2022 Apr 8;12(4):e057867.

[An ethical framework for presenting scientific results to policy-makers.](#)

Schroeder SA. *Kennedy Inst Ethics J*. 2022;32(1):33-67.

Debates arising in news and social media

[L'angoisse des immunodéprimés.](#)

Borde V. *L'actualité*. 6 avril 2022.

['Nothing about this felt OK': The troubling debate over a 'good' death for all](#)

Faruqui F. *The National Post*. April 4, 2022.

[Fact resistance, human nature and contemplation.](#)

Segerdahl P. *The Ethics Blog*. March 22, 2022.

[Open science, done wrong, will compound inequities.](#)

Ross-Hellauer T. *Nature*. March 14, 2022.

[Expériences - le vécu avec la maladie et les soins.](#)

Unité de soutien SSA Québec. Mars 2022.

User-oriented health ethics resources

[Health ethics and the Covid-19 pandemic: recent and relevant literature](#)

By the *Pragmatic Health Ethics Research Unit*

For more resources on pragmatic health ethics theory and practice, visit our website at
<http://www.pragmatichealthethics.ca>.



Copyright © 2020 Pragmatic Health Ethics Research Unit, All rights reserved.

Want to change how you receive these emails?
You can [update your preferences](#) or [unsubscribe from this list](#).

This email was sent to mariana.correro@ircm.qc.ca
[why did I get this?](#) [unsubscribe from this list](#) [update subscription preferences](#)
Pragmatic Health Ethics Research Unit · 110 avenue des Pins Ouest · Montreal, Qc H2W 1R7 · Canada

